

Application Overview

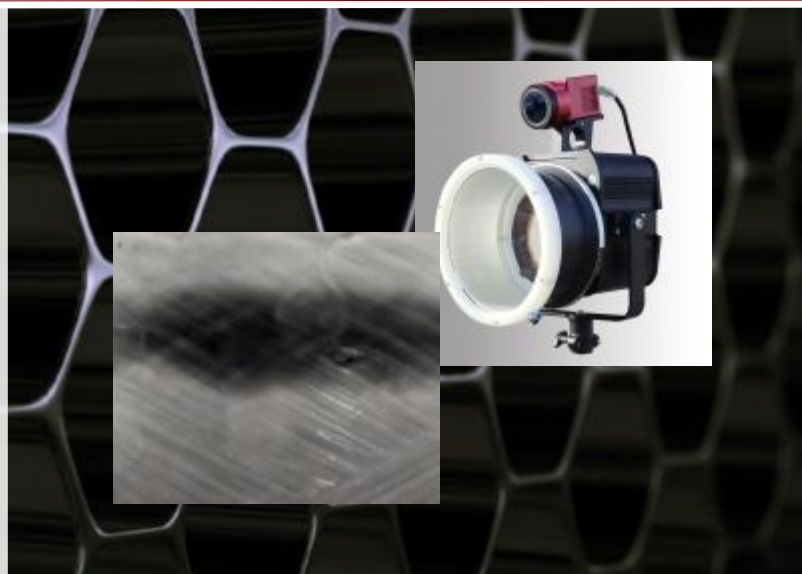
C-CheckIR - Mobile NDT Systems for Aerospace

- First Real Mobile Active Thermography NDT System
- Suitable for the Inspection of Composite Materials
- Detects Delaminations, Water Inclusions and others
- Complies with Airbus NTM 55-40-50; DIN 54192
- Fast Large-Area Inspection
- Contact-Free Measurements
- Result of the Measurement displayed as an Image (Touch-Screen)
- Preconfigured Measurement Configurations for Easy Operation
- Mobile Design, Applicable even on Vertical Surfaces



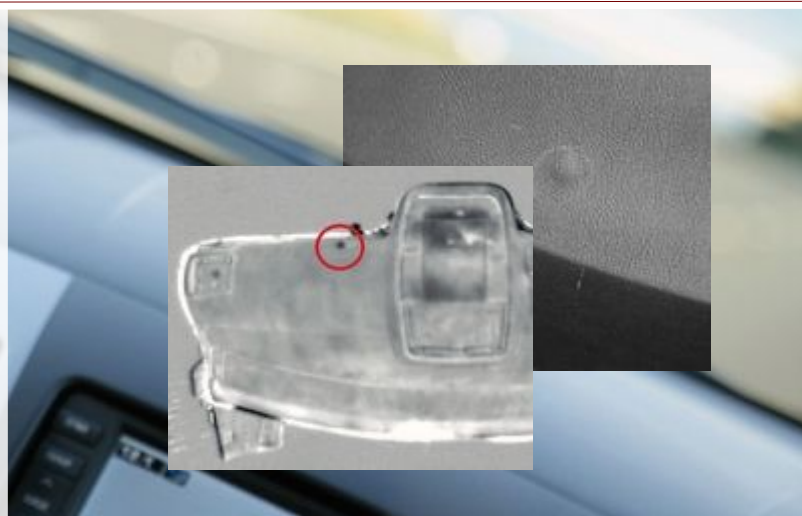
CompositeCheck - Inspection of Composite Materials (e.g. CFRP, GFRP)

- Fast Large-Area Inspection
- Contact-Free Measurements
- The System supports Different Active Thermography Techniques (Lock-In, Lock-In Online, Transient, Pulsed, ...)
- Automation Interface for Data Exchange and Control
- The System supports a Wide Variety of Infrared Cameras
- Different Software Analysis Tools Available to enhance Defect Detection
- Result of the Measurement Displayed as an Image
- Also Available as OEM Component (**C-CheckIR Sensor**) for Easy Integration into Quality Assurance Processes



DashboardCheck - Detection of Voids in Foamed Parts

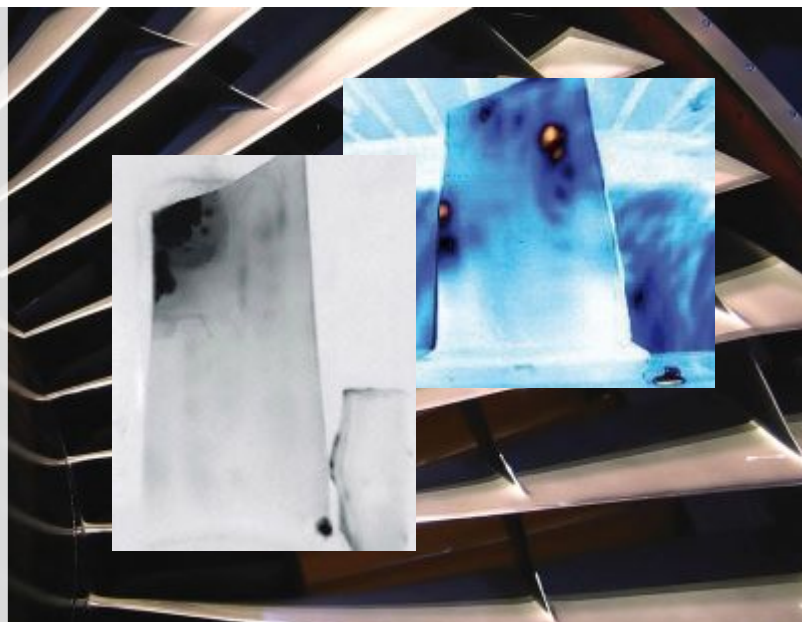
- Analysis of Changes in Thermal Conductivity within the Material
- Fast Detection (Inspection Time \approx 5 Seconds)
- Contact-Free Inspection
- Result of the Measurement displayed as an Image
- Integrated Functions for Performing Automated Measurements
- Automatic Storage of the Inspection Results in a Database (Measurement Parameters, Barcode, ...)
- Easy Integration in Existing Production Process



Application Overview

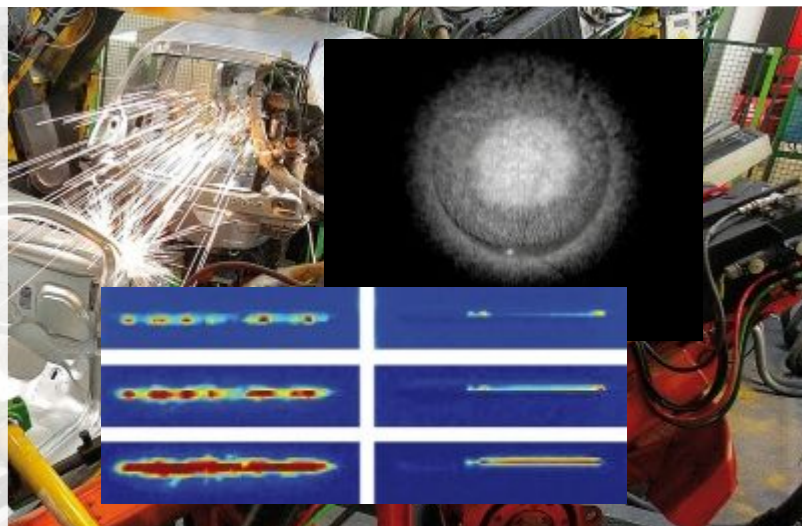
CrackCheck - Detection of Cracks in Parts (e.g. Turbine Blades)

- Detection of Cracks even Below the Surface
- Fast Inspection Time (e.g. <12 sec.)
- Automation Interface for Data Exchange and Control
- Result of the Measurement displayed as an Image with Defects Clearly Highlighted (Dark Field Method)
- Suitable for Localization of Internal Cracks
- Results can be automatically stored in a Database



WeldCheck - Inspection of Welded Joints

- Complete Solution for the NDT Inspection of Metallic Welded Joints: e.g. Welded Seam or Spot Welding
- Fast Inspection Time (e.g. <1 sec.)
- Contact-Free Inspection
- Highly Accurate Inspection Results (as Image)
- Results can be automatically stored in a Database
- Automation Interface for Data Exchange and Control



SolarCheck - Complete Modular System for Solar Cell Inspections

- Detection of Shunts with Optical Modulation (ILIT)
- Detection of Shunts with Electrical Modulation (DLIT)
- Emission Analysis
- Crack Detection
- Carrier Density Imaging (CDI)

